



ASSOCIATION FOR EDUCATION AND SUSTAINABLE DEVELOPMENT

Phone: +40.242.311.760; +40.724.027.969

Fax: +40.242.315.155

E-mail: gabrieldobrescu10@yahoo.com

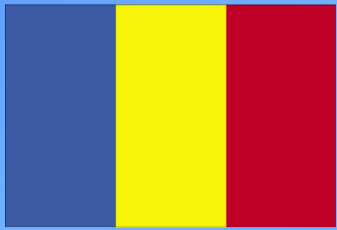
www.aesd.ro

CALARASI, ROMANIA



Calarasi in Europe





Calarasi County

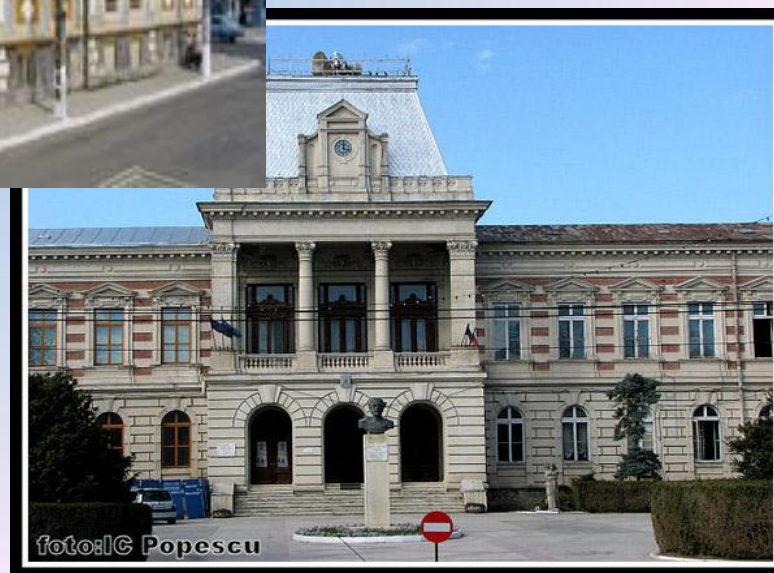


Calarasi is located in South – East Romania,
near the border with Bulgaria





Cultural, historical and architectural monuments in the Town of Calarasi

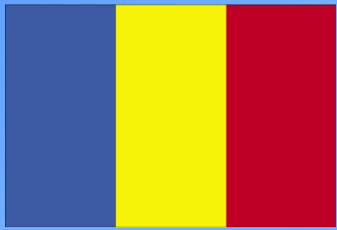




The Danube at Calarasi



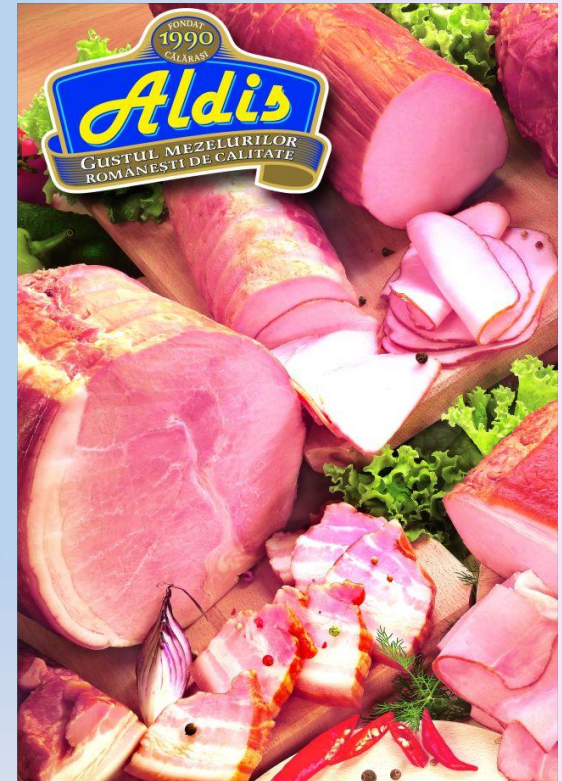
Cargo and people transport is provided by the Danube



Its economy consists of Industry



- Industry is normally based on processing activities. The main branches are: food and drinks industry, textile industry, cellulose and paper products, glass factory.





Agriculture



Cultivation of wheat, maize, sun-flower, soya bean, oat, rape and vegetables.



Goal

The goal of the Association is to promote lifelong learning in society in order to facilitate the development of an active citizenship, social cohesion and employment.



Objectives

1. The implementation of a new culture of education on the perspective of development of the new informational society, knowledge based.
2. The development of a proper frame to build competences and skills in the field of Information and Communication Technology, foreign languages, scientific and technological culture, the protection of environment and nature, the development of entrepreneurship and professional, managerial and social competences.
3. Instrumentalisation of the concept “lifelong learning” in order to accelerate the local and regional renaissance, the development and the adjustment of adult education to facilitate social and professional insertion.



Activities

- To plan and implement complementary programs / courses of formal, non-formal and informal lifelong education.
- To setup local, regional, national partnerships and projects to apply the lifelong learning concept.
- To implement new ICT technologies (education through internet and computers) in order to improve education.
- To create an evaluation and assessment system of educational achievements according to the international standards.
- To plan and build an organized system of consulting, information and training for career guidance with a lifelong duration.
- To setup the strategy to promote lifelong learning program as part of modern life style.



- To elaborate and develop programs for early education; scholarship granting system for kids and young people with excellent results, also programs for seniors.
- To elaborate projects for senior citizens in order to integrate old people in programs aimed for an active old age.
- To create the conditions for recognized education by diplomas, certificates and qualifications.
- To design and produce educational software and learning portals as support for lifelong learning.
- To setup projects to get grants from programs focused on education of disadvantaged people (minorities groups, person in prison, immigrants).



Departments

1. Department “Lifelong Learning and Modern Didactics.”
2. Department “Arts, Trades and Technologies”
3. Department “Youth”
4. Department “Ecology and Environment Protection”
5. Department “Career Guidance, Professional Development and Training”
6. Department “Health, Social Assistance and Social Recovery”
7. Department “Human Rights and Active Citizenship”



Partnerships in European Projects

Year	Programme or Initiative	ID number	Lead partner	Project title	Submitted to
2007	LLP Grundtvig (GMP)	133860 – LLP – 1 – 2007 – 1 - IT – Grundtvig - GMP	Province of Parma School Departement, Italy	Education as laboratory for integration (www.elfi-project.eu)	European Commission
2008	LLP Grundtvig (GMP)	142137 – LLP – 1 – 2008 – 1 – IT – Grundtvig - GMP	Populare University of Rome, Italy	Learning in Action for a New Citizenships Education System (www.lances.eu.com)	European Commission
2008	LLP Grundtvig learning partnerships	08-GRU-P-LP-35-CL-ES	Universitat Jaume, Castellon, Spain	Active citizenship through information and communication technologies at all ages (www.activeict.org)	European Commission
2008	LLP Leonardo partnerships	LLP – LdV /PAR/2008/RO/ 023	Weiterbildung Netzwerk GmbH, Tübingen, Germany	Coach in VET (Vocational Education Training) (www.coach-in-vet.eu)	European Commission



Partnerships in European Projects

Year	Programme or Initiative	ID number	Lead partner	Project title	Submitted to
2009	LLP Grundtvig (GMP)	502126 – LLP – 1 – 2009 – 1 - FI – Grundtvig – GMP	Pielisen Karjalan Kehittämiskeskus Oy, Finland	Extending Working Life – Pedagogy Assisting Workforce Transition (http://pawt.pikes.fi/)	European Commission
2009	LLP Grundtvig learning partnerships	09-GRU-P-LP-31-CL-FR	Sauvegarde 56 – Sos Accueil – CHRS Mozaik, Lorient, France	Implementing social pathways to ameliorate the situation of wandering homeless persons (www.ispaw.eu)	European Commission
2009	LLP Leonardo Transfer of Innovation	UK/09/LLP-LdV/TOI-163_272	Merseyside Expanding Horizons Limited, Liverpool, UK	Crossing the Line: Eurospectives (www.crossingtheline.eu)	European Commission



Partnerships in European Projects

Year	Programme or Initiative	ID number	Lead partner	Project title	Submitted to
2010	LLP Grundtvig (GMP)	511016 – LLP – 1 – 2010 – 1 – AT - Grundtvig-GMP	Forschungsins- titut des Roten Kreuzes, Vienna, Austria	Meet the Need. Vocational teaching material supporting the integration of migrants into the labour market (http://www.meet-the-need-project.eu)	European Commission
2010	LLP Leonardo partnerships	LLP – LdV /PAR/2010/RO/ 006	Agentur Kultur GbR, Munchen, Germany	Training for church guides and cultural heritage. Exchange about certified training courses for professional touristic guides	European Commission
2011	LLP Grundtvig learning partnerships	GRU-11-P-LP- 122-CL-UK	London Borough of Enfield, UK	Partners in adult learning (PALS)	European Commission



Partnerships in European Projects

Year	Programme or Initiative	ID number	Lead partner	Project title	Submitted to
2011	LLP KA3	519255-LLP-1-2011-1-IE-KA3-KA3MP	Meath Community Rural and Social Development Partnership Limited, Ireland	Community Learning Social Networks – Harnessing Educational Assets & Addressing Educational Needs (NetBox)	European Commission
2011	LLP Leonardo Transfer of Innovation	2011-1-HR1-LEO05-00828	University of Zagreb, Faculty of Science, Croatia	Integrated physics approach to robotics designed laboratory (InFiRo)	European Commission
2011	Call for proposals EACEA/16/2011: Promoting the Integration of Roma in and through Education	358053-1-LLP-1-2011-IT-KA1-KA1MPR	Centro Studi e Formazione Villa Montesca, Italy	MyBeautifulSchool - a place where it is possible to be happy (MBS)	European Commission



Partnerships in European Projects

Year	Programme or Initiative	ID number	Lead partner	Project title	Submitted to
2012	LLP KA4	530901-LLP-1-2012-IE-KA4-KA4MP	County Meath Vocational Educational Committee, Navan, Ireland	Early School Leaving & Second Chance Education (ESSE)	European Commission
2012	LLP Leonardo Transfer of Innovation	2012-1-IT1-LEO05-02837	CONFAPI, Perugia, Italy	B-Plan second round (B-Plan.2)	European Commission
2012	LLP Grundtvig (GMP)	526185-LLP-2012-UK-GRUNDTVIG-GMP	Eldonian Group Limited, Liverpool, UK	Progressing Entrepreneurial Goals (PEGS)	European Commission
2013	LLP Leonardo Transfer of Innovation	2013-1-PT1-LEO05-15504	Universidade Aberta, Lisbon	Creative Industry Network of Entrepreneurs (CINetwork)	European Commission



Partnerships in European Projects

Year	Programme or Initiative	ID number	Lead partner	Project title	Submitted to
2014	Erasmus+ KA2 Strategic partnership	2014-1-DE02-KA204-001424	Jugendförderverein Parchim/Lübz e.V., Germany	Integration into vocational training, employment and social partaking in European context (INVOLT)	European Commission



Thank you for your attention!